

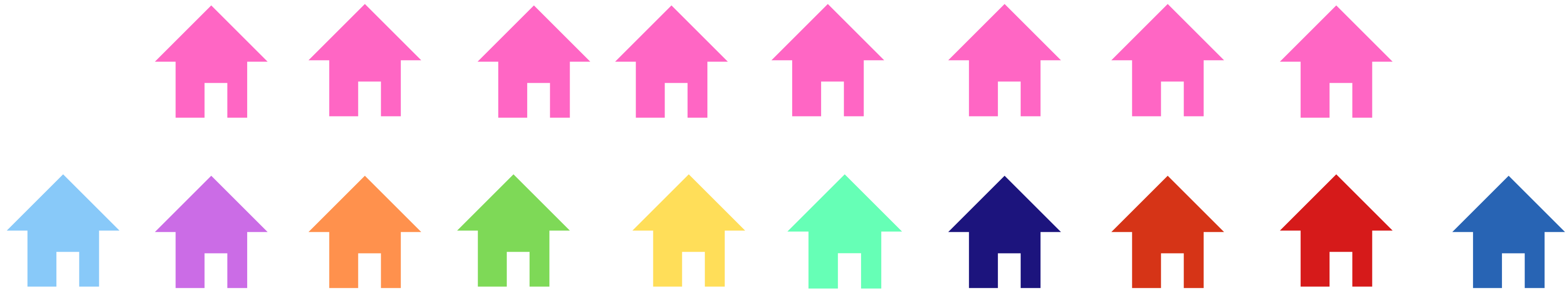
Creating a community of practice around systematic review support

Iona Preston

Engineering Liaison Librarian, UCL

iona.preston@ucl.ac.uk





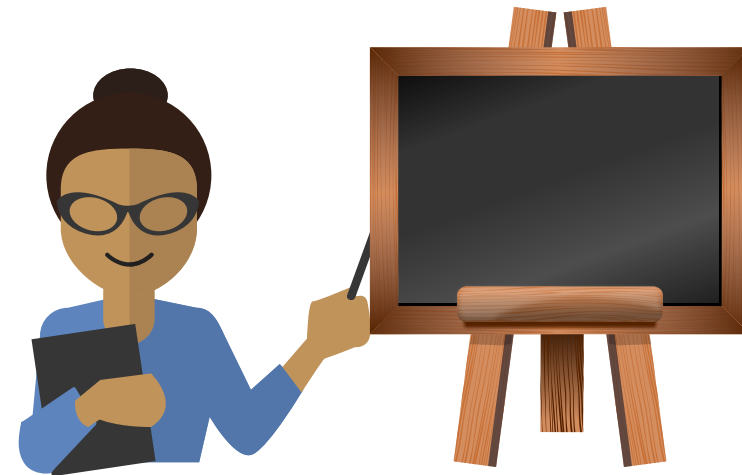
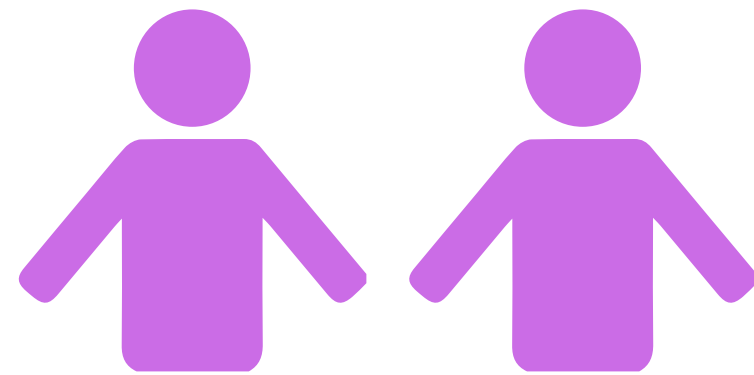
UCL has 18 libraries that cover all areas of teaching and research - including 8 medical libraries that serve academic staff, students and NHS.



UCL Systematic Reviews: Not just biomedical.

**From climate change to the built environment
to policing to education and more...**

How do we support systematic reviews at the moment?



One-to-one tutorials, taught classes, mediated searches, online support

Issues with supporting systematic reviews



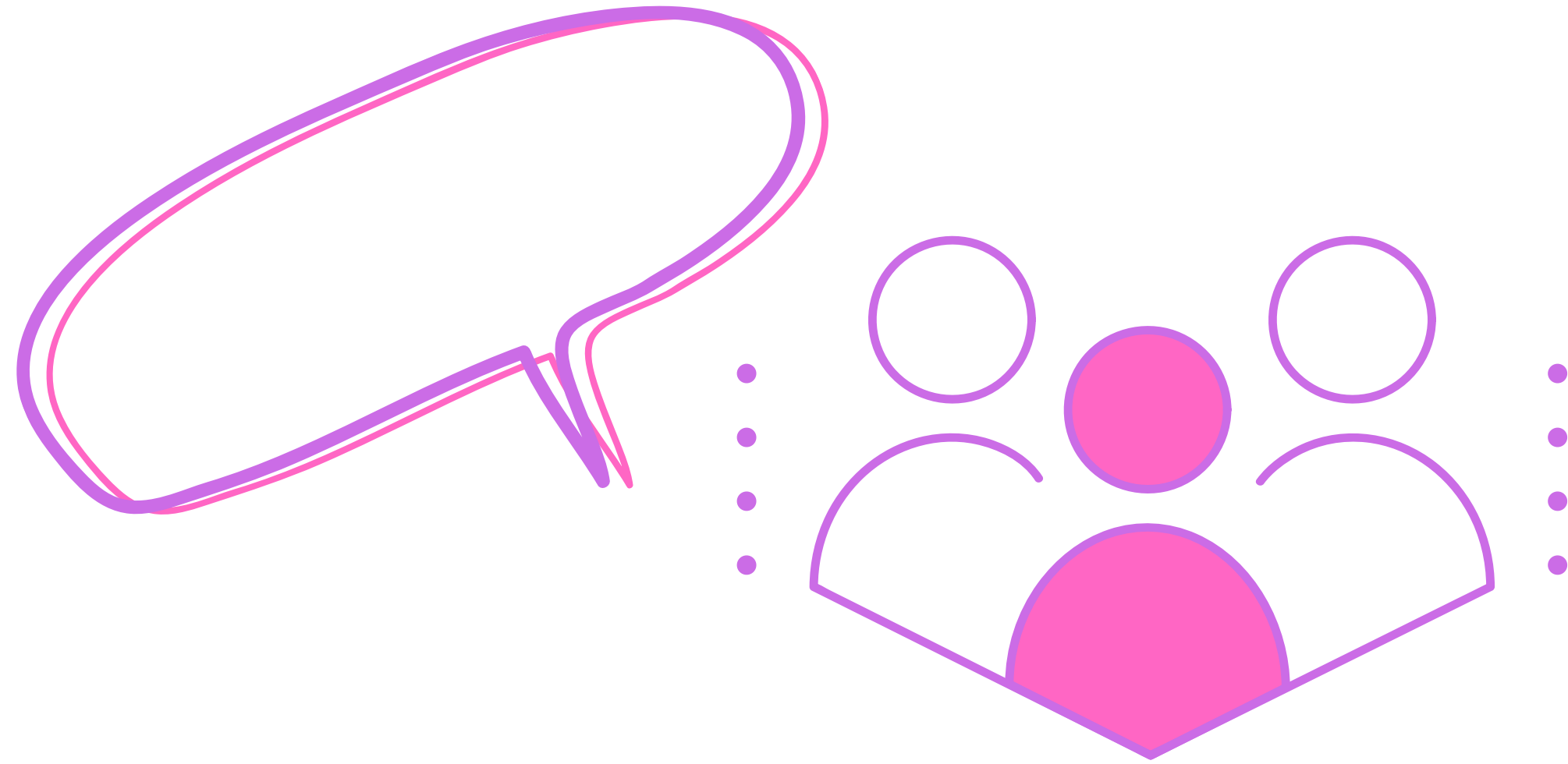
Staff skills and confidence



Time and resources



Managing boundaries for student work



Creating a community of practice: focusing on support for library staff and building consensus