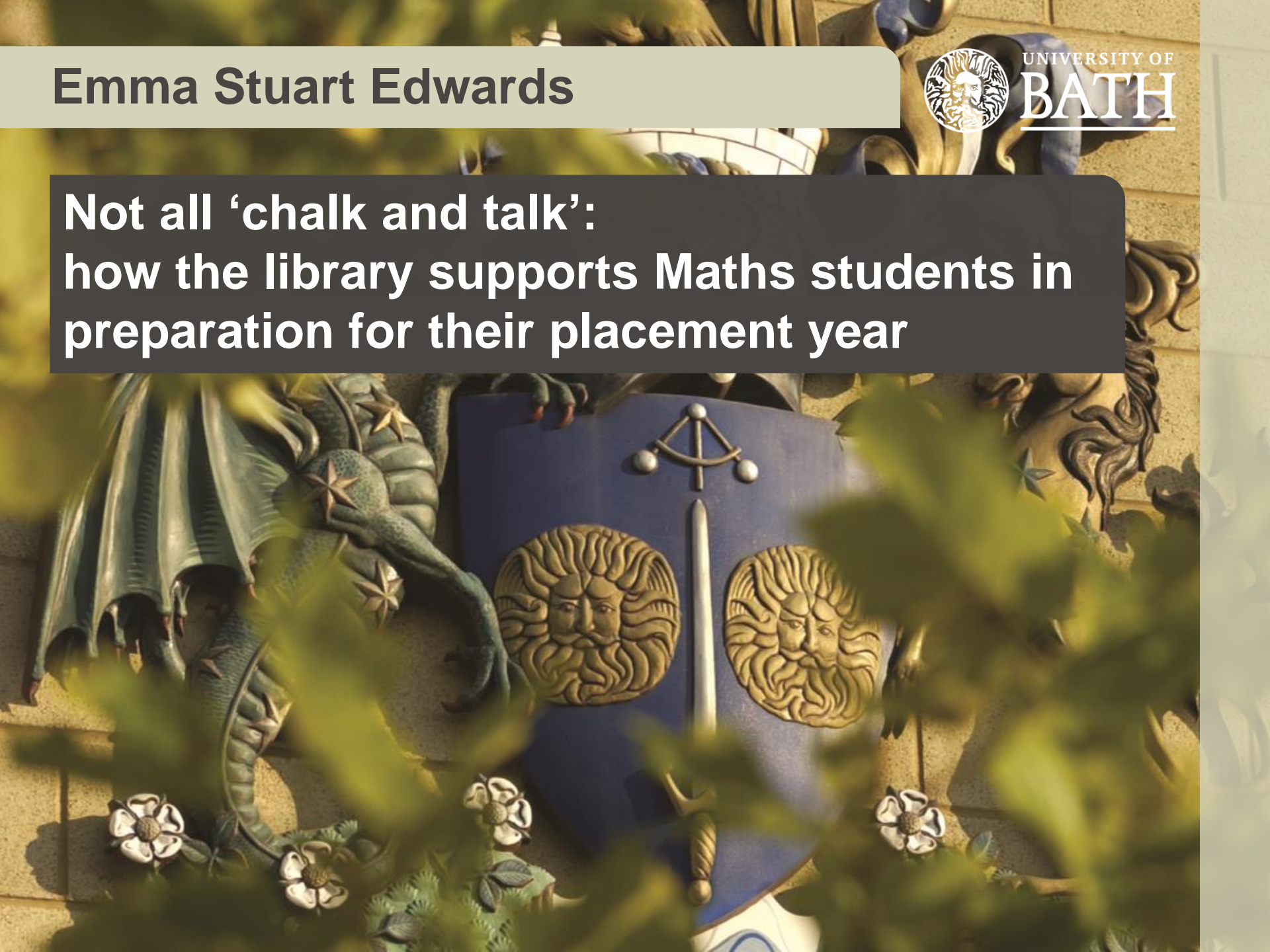


**Emma Stuart Edwards**



UNIVERSITY OF  
**BATH**

**Not all 'chalk and talk':  
how the library supports Maths students in  
preparation for their placement year**



# Students at Bath

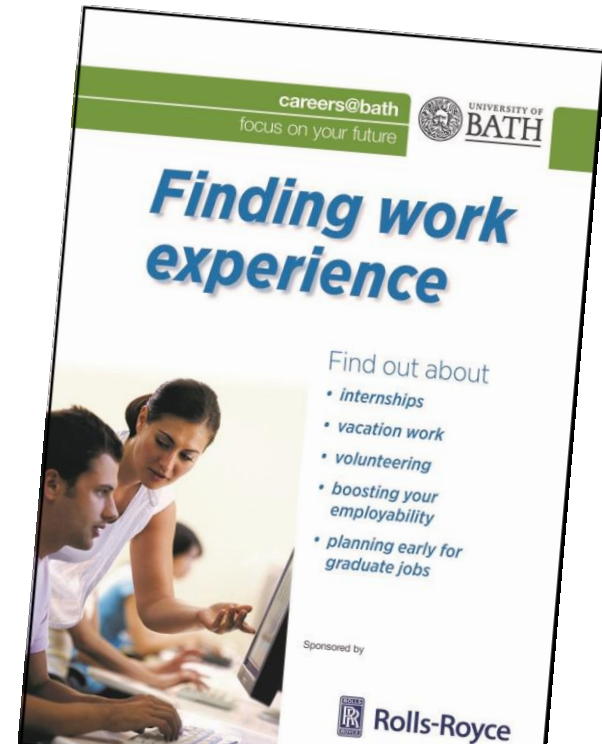
- 54% male, 46% female
- Undergraduate: 11,315  
Postgraduate: 4,255
- 30% of students from outside of UK
- Math's department have 350+ new first year intake per year





# Employability at Bath

- 86% of our employed UK full-time first degree graduates move into top-level jobs, compared to 71% of employed graduates nationally
- Nearly two-thirds of our undergraduates choose a placement or study year abroad
- Our graduates have a mean salary of £26,000, which is £4,500 more than the equivalent for all higher education providers in the UK
- 300 to 400 employers visit the University every year



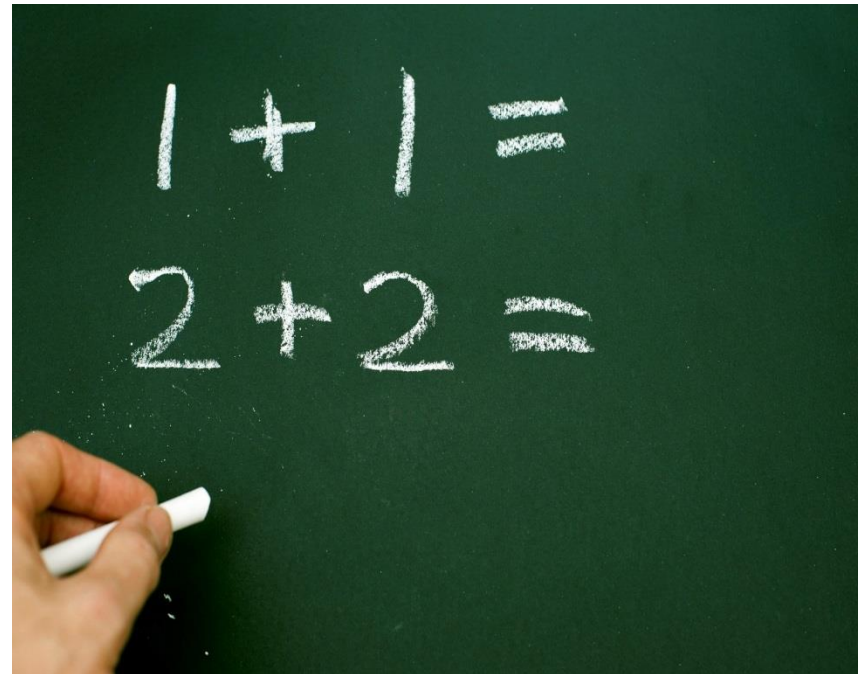
Careers  
Service



UNIVERSITY OF  
**BATH**

# Inherited library support for Maths

- Central induction
- Final year project support
- Postgraduate Skills –  
combined with Computer  
Science



## What changed




- Shorter central induction
  - Trialled subject specific induction (Sept 2013)
- Postgraduate Research expressed lack of skills in placement year
- Attended “Company Information” workshop

# Online support

- Employability skills
- Created a Moodle (VLE) module for Maths first year students
- Directors of Studies put me in touch with Placements Officer

## The library: for Mathematics students

Emma Stuart Edwards 


Useful Links ▾ My courses ▾ Search courses 🔍

### Introduction

This short course, for all Maths first year undergraduates, will guide you through advanced catalogue searching for books and subjects. It also introduces some other tools you can use to find materials for your studies.

There are three topics for you to complete.

TIP: if you find the sound isn't loud enough, listen to the videos with headphones and always use headphones in the library and public spaces.

 News forum

### What you will learn

At the end of this course you will be able to:





- Recognise a reference to a book and a journal
- Use suitable catalogue search options to find books from your reading list
- Use simple catalogue search to find materials on a subject

### Calendar

November 2016

Sun	Mon	Tue	Wed	Thu	Fri	Sat
		1	2	3	4	5
6	7	8	9	10	11	12
13	14	15	16	17	18	19
20	21	22	23	24	25	26
27	28	29	30			

#### EVENTS KEY

-  Hide global events
-  Hide course events
-  Hide group events
-  Hide user events



# Placement talks

- May 2014: Met placements officer and pitched idea.
- Sept 2014: Delivered introduction to management databases to 2<sup>nd</sup> year placement students
- June 2015: Summer Pilot of online course for first year placement students



# Careers VLE module

## SORT 11. Sector research

Use the research you have undertaken to answer these three questions:  
(Please note, the amount of information available will be dependant on the sector you have chosen)

- 1) From the research undertaken, what were the top three companies listed?
- 2) Where a business challenge summary has been provided, what are the key challenges within this sector?
- 3) Looking through the News & Social section, which news item did you find particularly interesting?

Feedback

- Careers service wanted to include activities on the management databases
- Feedback for pilot (summer 2015) was that the group hadn't had any library skills training



## Challenges (or not!)

- Most of the planning and hard work by Placement Officer and Careers
- Right time, right place
- Who you talk to
- Hook words



## Future



- Summer 2017 rolling out to all Faculty of Science students
- Upscaling the Maths project teaching
- Promotion of Bath Harvard BibTeX style files

## Discussion?

Does anyone here offer similar support for placement students? Or make use of subject specific databases for something other than coursework?

Does anyone have any thoughts about improving what I currently offer?

Upscaling the Maths project teaching from 8 students to 80. Any thoughts on delivery or what to include?

# Questions



Emma Stuart Edwards

@embrarian

e.stuartedwards@bath.ac.uk