

Notes from a distant island: Newcastle University in Singapore



Transnational education:

“All types of higher education study programmes, or sets of courses of study, or educational services (including those of distance education) in which the learners are located in a country different from the one where the awarding institution is based.” (Council of Europe, 2002).

International Branch Campus:

“a higher education institution that is located in another country from the institution which either originated it or operates it, with some physical presence in the host country and which awards at least one degree in the host country that is accredited in the country of the originating institution” (Lawton and Katsomitro, 2012).

Newcastle University's Strategic Objectives:

Internationalisation abroad:

- Develop a number of well-functioning and well-recognised offshore operations to deliver excellence in teaching, training and research
- Further develop our portfolio of international academic collaborations
- Develop a cohort of high-quality Partner Universities abroad that share our vision



**SINGAPORE
INSTITUTE OF
TECHNOLOGY**

10 University partners

24 programmes

Newcastle (will) offer 7 of these



UG Degree Programmes (at present)

MAST

Marine Technology

Marine Engineering
Naval Architecture
Offshore Engineering

CEAM

Chemical Engineering

Environment and
Sustainability

MSE

Mechanical
Engineering

Manufacturing

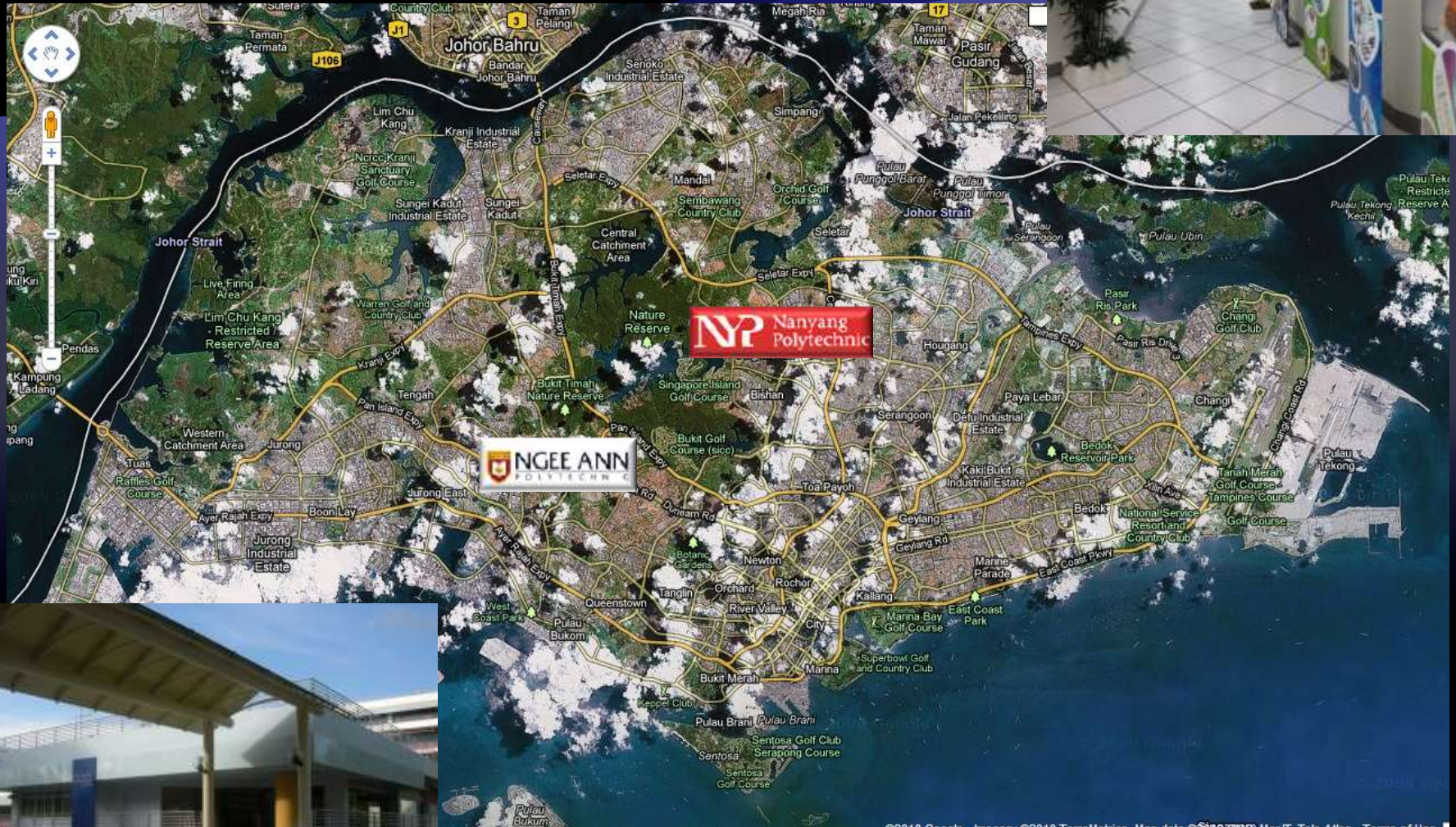
AFRD

Food and
Human Nutrition

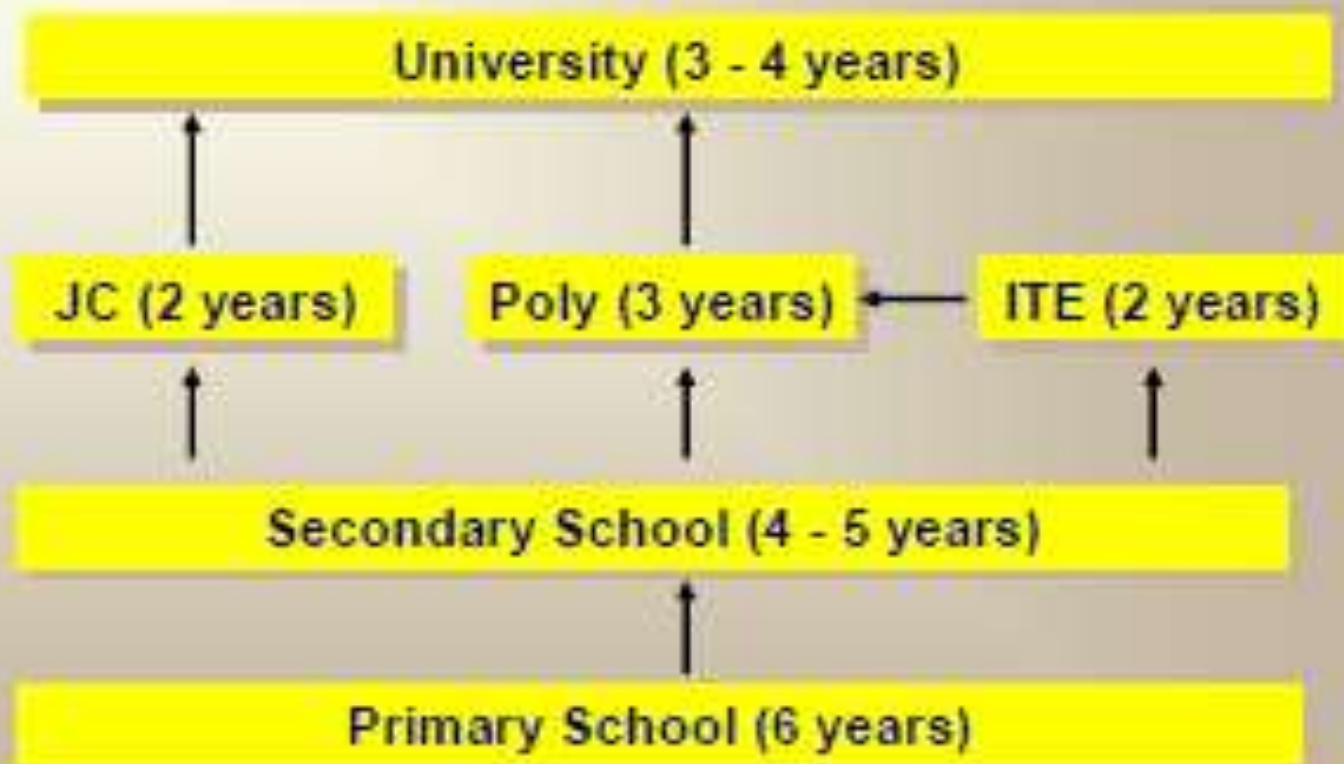
Ngee Ann Poly (NP)

Nanyang Poly (NYP)

Singapore



Education Structure





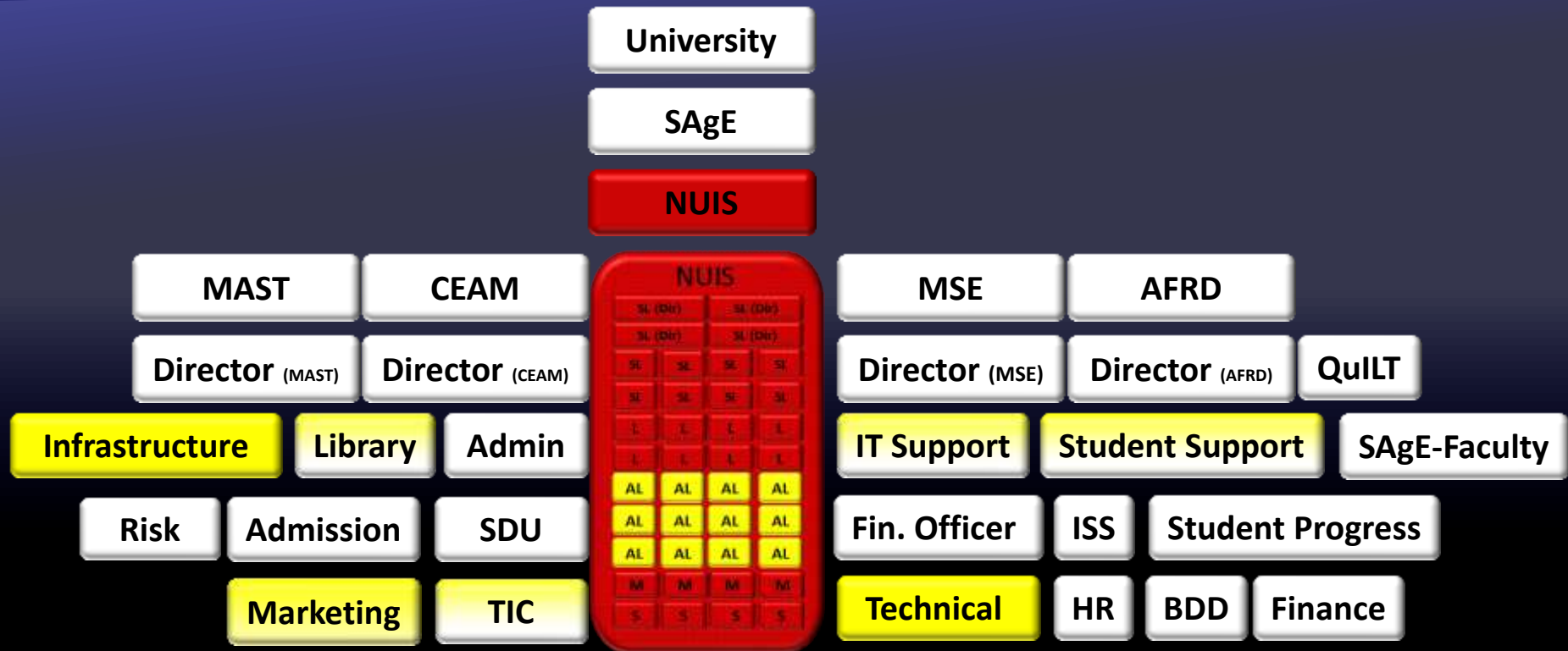
Parity of Experience



For Staff and Students



Where does the Library fit in?



How does it work in practice?





All staff requests of materials and resources are through the Directors of the Schools and they have become transparent to the Library. I have also approved most acquisitions **as long as the Directors agreed that they are also relevant to our own students at NYP.**

Backroom stuff

“We have not received any ILL requests. Our own policy is that we do not usually do ILL requests for students but direct them to the other institutions with a referral letter. Students could only refer to the books in another library. However, ILL is open to our own lecturers. We do not do ILL for materials found in overseas libraries.”

Reading lists

E-access

Licences

Inter Library loans

Copyright



What's gone well?



Blackboard module
Staff development
Library Guide

<http://libguides.ncl.ac.uk/nuis>

Overseas Immersion
Programme

I just thought I'd thank you and colleagues for the time you put into setting-up the Singapore library guides. We found that there are various ways into some of the e-resources off-site, not all of which give full text access and without the guides we would have been in a bit of a mess here – students had no difficulties using these very quickly (so thanks very much!).
Programme Director,
Singapore

The screenshot shows the homepage of the Newcastle University International Singapore Libraries Guide. The header features the Newcastle University logo and the text 'Library Guides'. Below the header, there is a navigation bar with tabs for 'Welcome', 'Library staff', 'Chemical Engineering', 'Food & Human Nutrition', 'Marine Technology', and 'Mechanical Engineering'. A search bar is located on the right side of the page. The main content area includes a welcome message, a list of resources, and a section for 'Newcastle Library Twitter for Science and Engineering' with a list of tweets. The footer contains contact information for the Library Liaison Team.

Newcastle University Library Guides

Library » Library Guides » Newcastle University International Singapore Libraries Guide

Newcastle University International Singapore Libraries Guide Tags: ceam, food, marine technology, mse, nutrition

Information about the libraries and resources at Newcastle University, NgeeAnn Polytechnic and NanYang Polytechnic for all Newcastle University International Singapore staff and students

Last Updated: May 3, 2013 | URL: <http://libguides.ncl.ac.uk/nuis> | [Print Guide](#) | [RSS Updates](#) | [SHARE](#) [f](#) [t](#) [e](#)

Welcome Library staff Chemical Engineering Food & Human Nutrition Marine Technology Mechanical Engineering


Referencing EndNote Writing Help Market Research

Welcome [Print Page](#) Search: This Guide

Welcome

Welcome to the Library Guide for students and staff of Newcastle University International Singapore

The Guide will help you to explore the electronic resources available to you via Newcastle University Library as well as the physical resources available at NgeeAnn Polytechnic and Nanyang Polytechnic Libraries in Singapore.



Click on the tabs above for detailed information for your subject strand

Contact the Library Liaison Team at Newcastle lib-sage@ncl.ac.uk if you need any help and advice, we love to hear from you!

Newcastle Library Twitter for Science and Engineering

[Follow @nulibsage](#) 615 followers

- nulibsage: Should university students use Wikipedia? <http://t.co/3wDODtXfLy> via @guardian
- nulibsage: BBC News - Young people 'prefer to read on screen' <http://t.co/7UDDdQtiET>
- nulibsage: Win a £50 Amazon gift voucher! Take 5 minutes to fill out our referencing survey & you could be the lucky winner! <http://t.co/YYkBBnHk9>

[View Website](#)
[View Feed](#)
[Comments \(0\)](#)

NP Library Twitter (from NP Lion Yinn Chow Library)

What's gone well?



Library Guide

<http://libguides.ncl.ac.uk/nuis>

Blackboard module

Staff development

Overseas Immersion

Programme



A lush tropical garden with various palm trees and green plants. In the background, a building with a thatched roof is visible. The scene is bright and sunny.

Some issues to consider

Costs: of licences, resources, travel

Staff time

Staff expertise

Communication

What's next in Singapore?

New Electrical Power UG programmes 2013/4
Faculty preparing Research Strategy for Singapore
Focus on research and collaboration with industry

- PhD students
- Doctoral training centre
- KPTs

New senior staff to be appointed to governance board

What about the library?

Beyond the next 5-10 years?



Thank you

