



All Change! Restructuring Academic Liaison

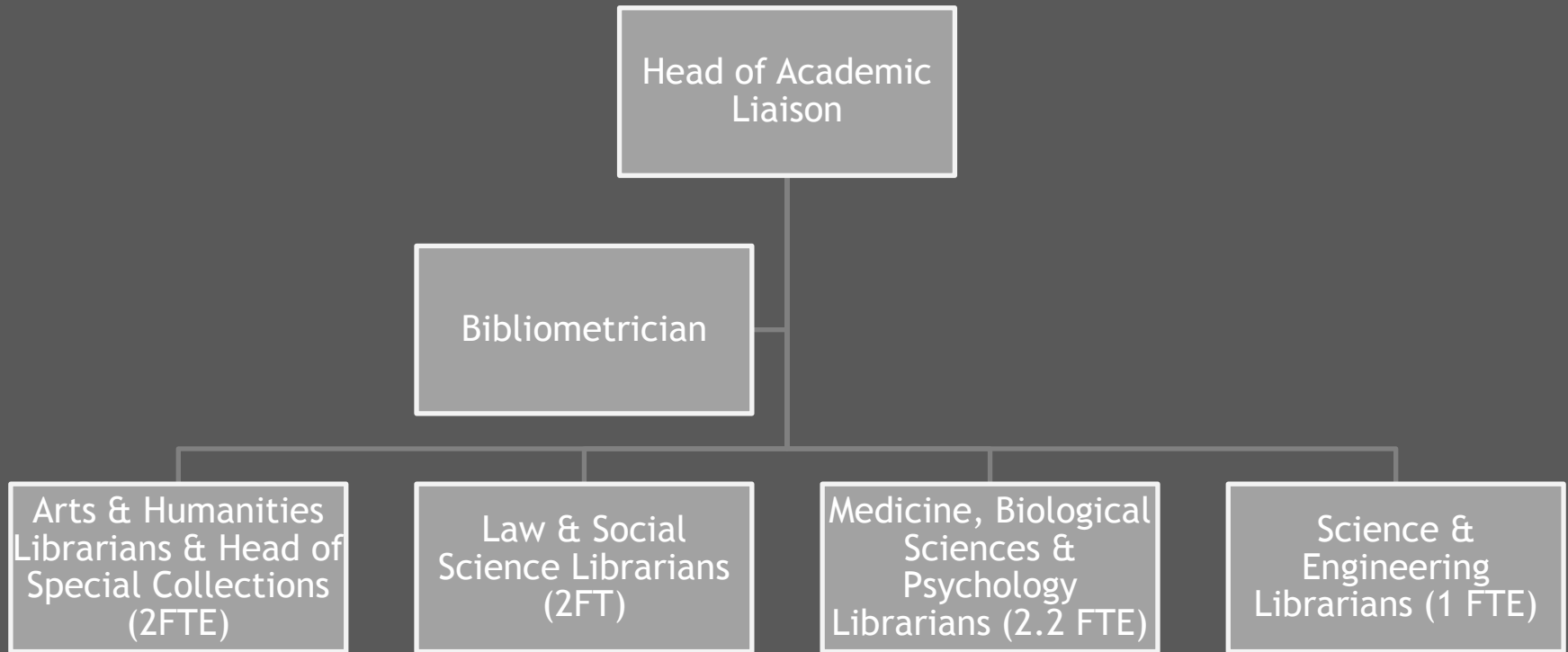
Selina Lock

Information Librarian (College of Science &
Engineering)

STL5@leicester.ac.uk

University of Leicester

Current Structure



Why restructure?



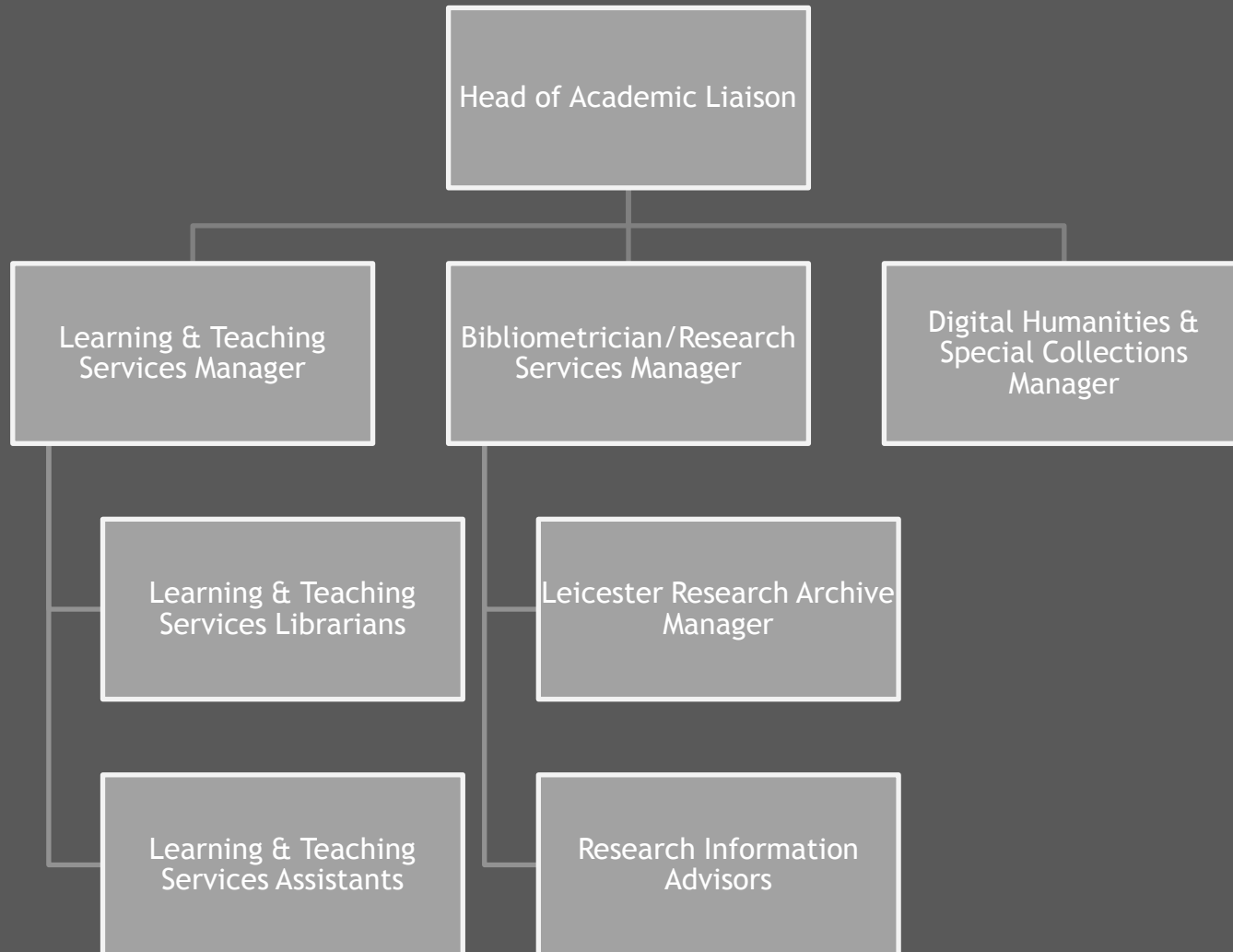
- Five members of staff left/leaving.
- Develop our research support services.
- Extend, improve and develop our online and ‘blended’ training in information skills.
- Maintain named contact points for academic departments.
- Develop our Special Collections & support digital humanities scholarship .



Staff Reaction was Mixed!



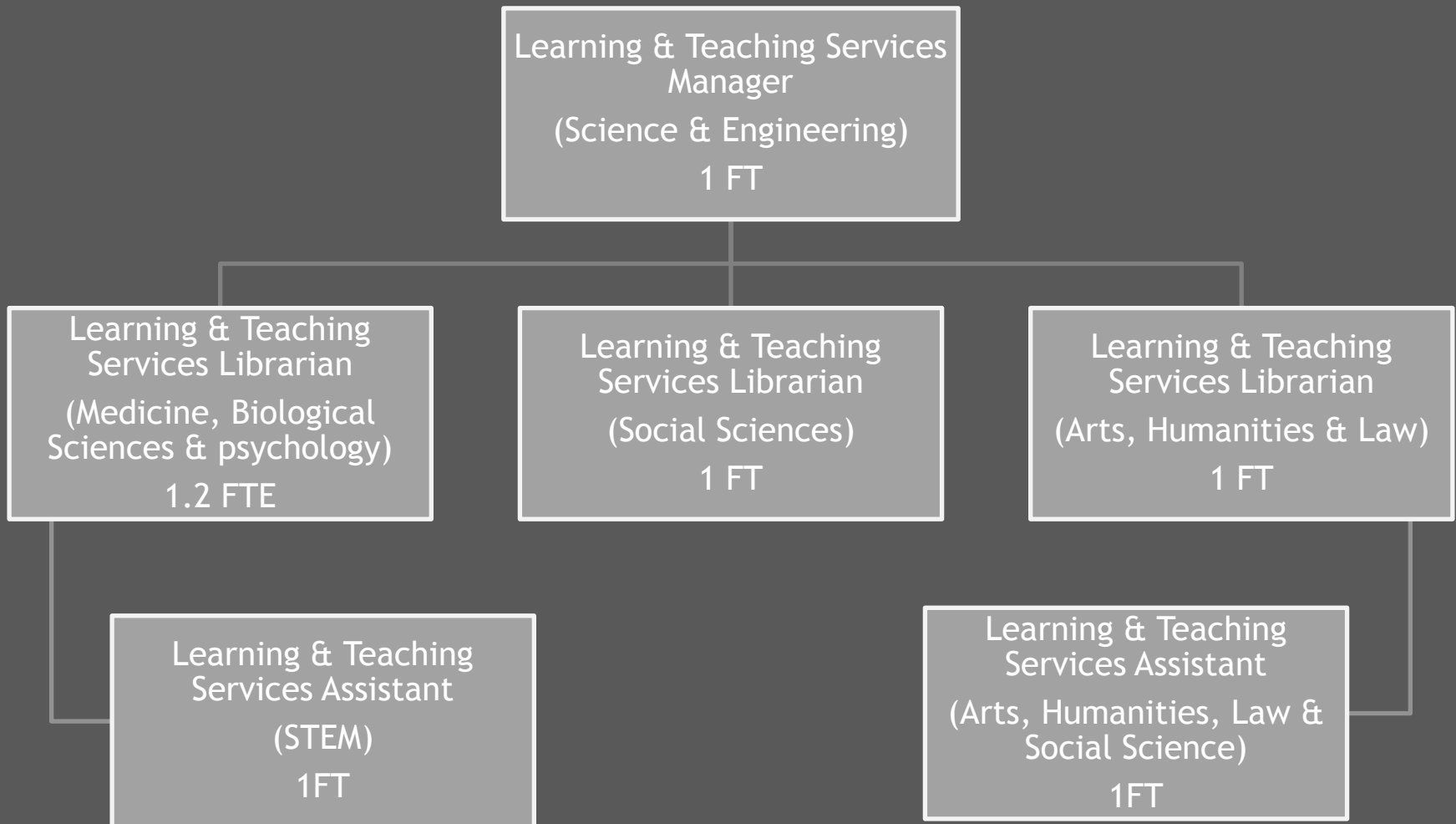
New Structure



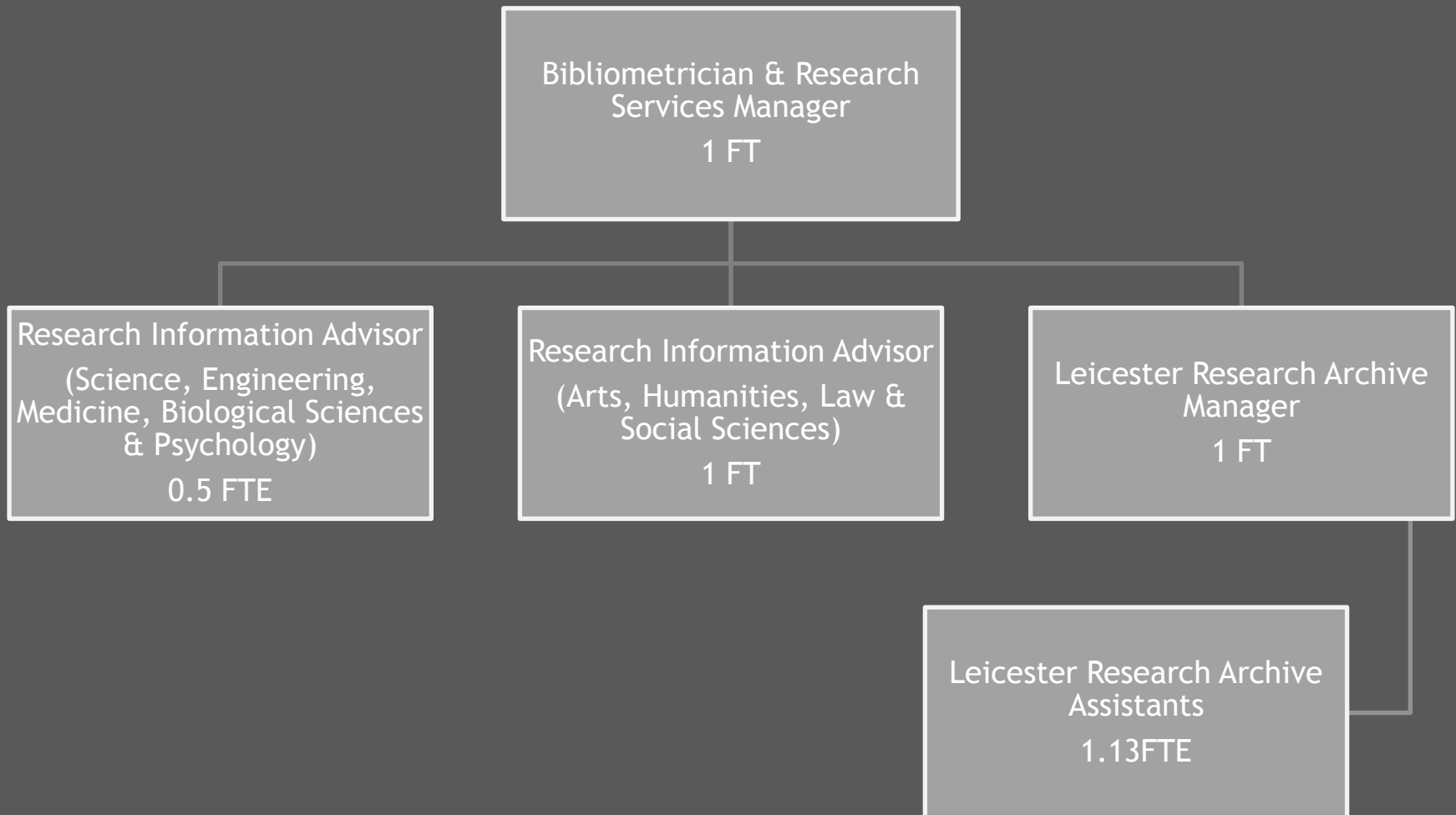
New Structure

- Teaching & Learning Services Team (UG/PG)
- Research Services Team (PGR & Researchers)
- Maintain subject specialisms but at a much broader level.
- T&L Team contact point for Departmental Library Reps.
- Subject Clusters across the two teams:
 - STEM
 - Arts, Humanities, Law & Social Sciences

Teaching & Learning Services

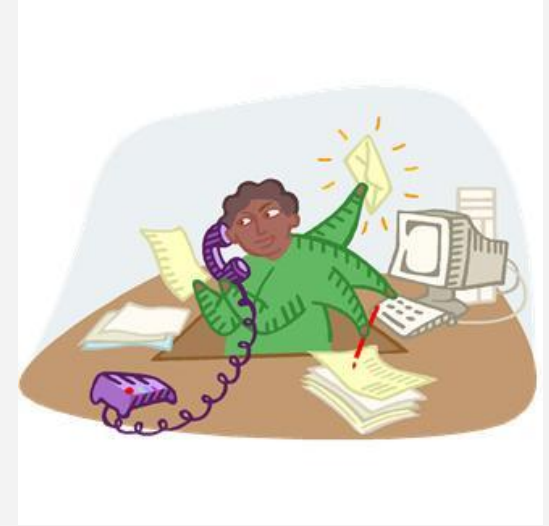


Research Support Team



What's this mean for me?

- Currently:
 - 0.5 FTE Information Librarian
 - Engineering, Computer Science & Maths (3 Depts)
- Will be:
 - 0.5 FTE Research Information Advisor
 - Science, Engineering, Medicine, Biological Sciences & Psychology (17 Depts!)



Enough about me...

- What do you think...
 - Do any of you have a T&L/Research split?
Pros & Cons?
 - What research support services do you offer?
 - How can we retain subject clusters and specialisms across a broad range of subjects?